

BESTSUB TECHNOLOGIES CO., LTD
 RM810 EXCHANGE SQUARE, NO268 DONGFENG ZHONG ROAD, YUEXIU DISTRICT,
 GUANGZHOU 510030 CHINA

The following sample(s) was/were submitted and identified on behalf of the client as:

Sample Description : FASHION BRACELET (01, 02, 03)
 SGS Ref No. : CAN13-151204
 Client Reference Information : Style / Item No.: SL01, SL02, SL03
 Test Performed : Selected test(s) as requested by applicant
 Sample Receiving Date : Sep 26, 2013
 Test Performing Date : Sep 26, 2013 to Oct 16, 2013
 Test Result(s) : For further details, please refer to the following page(s)

Test Requested	Result
To determine the Cadmium (Cd) & Lead (Pb) content(s) in the submitted sample(s).	Refer to next page(s)
To determine Phthalates(DBP, BBP, DEHP, DINP, DNOP, DIDP) content(s) in the submitted sample(s).	Refer to next page(s)
To determine the release of Nickel(Ni) content in the submitted sample(s) in accordance with the Entry 27 of Regulation (EC) No. 552/2009 amending Annex XVII of REACH Regulation (EC) No. 1907/2006 (previously restricted under Directive 94/27/EC & 2004/96/EC).	FAIL

Signed for and on behalf of
 SGS-CSTC Ltd.



Yan Lau
 Approved Signatory

This document is issued by the Company subject to its General Conditions of Service printed overleaf, available on request or accessible at <http://www.sgs.com/en/Terms-and-Conditions.aspx> and, for electronic format documents, subject to Terms and Conditions for Electronic Documents at <http://www.sgs.com/en/Terms-and-Conditions/Terms-e-Document.aspx>. Attention is drawn to the limitation of liability, indemnification and jurisdiction issues defined therein. Any holder of this document is advised that information contained hereon reflects the Company's findings at the time of its intervention only and within the limits of Client's instructions, if any. The Company's sole responsibility is to its Client and this document does not exonerate parties to a transaction from exercising all their rights and obligations under the transaction documents. This document cannot be reproduced except in full without prior written approval of the Company. Any unauthorized alteration, forgery or falsification of the content or appearance of this document is unlawful and offenders may be prosecuted to the fullest extent of the law. Unless otherwise stated the results shown in this test report refer only to the sample(s) tested and such sample(s) are retained for 30 days only.

Attention: To ensure the authenticity of testing /inspection report & certificate, please contact us at telephone: (86-755)83071443, or email: CN.Doccheck@sgs.com

Test Results :

Test Part Description :

Specimen No.	SGS Sample ID	Description
1	CAN13-151204.001	Silvery plated metal (chain)
2	CAN13-151204.002	Silvery plated metal bead (bracelet,semi-product)
3	CAN13-151204.003	Silvery plated metal(clasp,semi-product)
4	CAN13-151204.004	Silvery plated metal ring("O"-ring,semi-product)
5	CAN13-151204.005	Silvery plated metal (connector,semi-product)
6	CAN13-151204.006	Silvery plated metal chain(short chain)
7	CAN13-151204.007	Transparent soft plastic rope(bracelet)

Remarks :

- (1) 1 mg/kg = 0.0001%
- (2) MDL = Method Detection Limit
- (3) ND = Not Detected (< MDL)
- (4) "-" = Not Regulated

Cadmium (Cd) & Lead (Pb)

A. Test Method : With reference to US EPA Method 3050B:1996, analysis was performed by ICP-OES.

<u>Test Item(s)</u>	<u>Unit</u>	<u>MDL</u>	<u>001</u>	<u>002</u>	<u>003</u>
Cadmium (Cd)	mg/kg	5	20	41	ND
Lead (Pb)	mg/kg	10	113	40087	36

<u>Test Item(s)</u>	<u>Unit</u>	<u>MDL</u>	<u>004</u>	<u>005</u>	<u>006</u>
Cadmium (Cd)	mg/kg	5	ND	ND	ND
Lead (Pb)	mg/kg	10	ND	ND	ND

B. Test Method : With reference to US EPA Method 3052:1996, analysis was performed by ICP-OES.

<u>Test Item(s)</u>	<u>Unit</u>	<u>MDL</u>	<u>007</u>
Cadmium (Cd)	mg/kg	5	ND
Lead (Pb)	mg/kg	10	ND

This document is issued by the Company subject to its General Conditions of Service printed overleaf, available on request or accessible at <http://www.sgs.com/en/Terms-and-Conditions.aspx> and, for electronic format documents, subject to Terms and Conditions for Electronic Documents at <http://www.sgs.com/en/Terms-and-Conditions/Terms-e-Document.aspx>. Attention is drawn to the limitation of liability, indemnification and jurisdiction issues defined therein. Any holder of this document is advised that information contained hereon reflects the Company's findings at the time of its intervention only and within the limits of Client's instructions, if any. The Company's sole responsibility is to its Client and this document does not exonerate parties to a transaction from exercising all their rights and obligations under the transaction documents. This document cannot be reproduced except in full without prior written approval of the Company. Any unauthorized alteration, forgery or falsification of the content or appearance of this document is unlawful and offenders may be prosecuted to the fullest extent of the law. Unless otherwise stated the results shown in this test report refer only to the sample(s) tested and such sample(s) are retained for 30 days only.

Attention: To ensure the authenticity of testing /inspection report & certificate, please contact us at telephone: (86-755)83071443, or email: CN.Doccheck@sgs.com

Phthalate

Test Method : With reference to EN 14372: 2004, analysis was performed by GC-MS.

<u>Test Item(s)</u>	<u>CAS NO.</u>	<u>Unit</u>	<u>MDL</u>	<u>007</u>
Dibutyl Phthalate (DBP)	84-74-2	%(W/W)	0.003	ND
Benzylbutyl Phthalate (BBP)	85-68-7	%(W/W)	0.003	ND
Bis-(2-ethylhexyl) Phthalate (DEHP)	117-81-7	%(W/W)	0.003	0.008
Diisononyl Phthalate (DINP)	28553-12-0 / 68515-48-0	%(W/W)	0.010	ND
Di-n-octyl Phthalate (DNOP)	117-84-0	%(W/W)	0.003	ND
Diisodecyl Phthalate (DIDP)	26761-40-0 / 68515-49-1	%(W/W)	0.010	ND

Entry 27 of Regulation (EC) No 552/2009 amending Annex XVII of REACH Regulation (EC) No 1907/2006 (previously restricted under Directive 94/27/EC and 2004/96/EC)– Nickel release

Test Method : As specified in EN 1811: 2011+ AC:2012,.Analysis was performed by ICP-OES.

<u>Test Item(s)</u>	<u>Limit</u>	<u>Unit</u>	<u>MDL</u>	<u>001</u>
Sample Area	-	sq. cm	-	14.36
Volume of Test Solution	-	ml	-	14.36
Spot Test	-	-	-	Positive
Nickel Release - Trial 1	0.50	µg/sq. cm/week	0.10	ND
Nickel Release - Trial 2	0.50	µg/sq. cm/week	0.10	ND
Nickel Release - Trial 3	0.50	µg/sq. cm/week	0.10	ND

Conclusion **PASS**

<u>Test Item(s)</u>	<u>Limit</u>	<u>Unit</u>	<u>MDL</u>	<u>002</u>
Sample Area	-	sq. cm	-	2.30
Volume of Test Solution	-	ml	-	2.30
Spot Test	-	-	-	Negative

This document is issued by the Company subject to its General Conditions of Service printed overleaf, available on request or accessible at <http://www.sgs.com/en/Terms-and-Conditions.aspx> and, for electronic format documents, subject to Terms and Conditions for Electronic Documents at <http://www.sgs.com/en/Terms-and-Conditions/Terms-e-Document.aspx>. Attention is drawn to the limitation of liability, indemnification and jurisdiction issues defined therein. Any holder of this document is advised that information contained hereon reflects the Company's findings at the time of its intervention only and within the limits of Client's instructions, if any. The Company's sole responsibility is to its Client and this document does not exonerate parties to a transaction from exercising all their rights and obligations under the transaction documents. This document cannot be reproduced except in full without prior written approval of the Company. Any unauthorized alteration, forgery or falsification of the content or appearance of this document is unlawful and offenders may be prosecuted to the fullest extent of the law. Unless otherwise stated the results shown in this test report refer only to the sample(s) tested and such sample(s) are retained for 30 days only.

Attention: To ensure the authenticity of testing /inspection report & certificate, please contact us at telephone: (86-755)83071443, or email: CN.Doccheck@sgs.com

Nickel Release - Trial 1	0.50	µg/sq. cm/week	0.10	1.80#
Nickel Release - Trial 2	0.50	µg/sq. cm/week	0.10	1.90#
Nickel Release - Trial 3	0.50	µg/sq. cm/week	0.10	0.60*

Conclusion

FAIL

<u>Test Item(s)</u>	<u>Limit</u>	<u>Unit</u>	<u>MDL</u>	<u>003</u>
Sample Area	-	sq. cm	-	4.20
Volume of Test Solution	-	ml	-	4.20
Spot Test	-	-	-	Negative
Nickel Release - Trial 1	0.50	µg/sq. cm/week	0.10	ND
Nickel Release - Trial 2	0.50	µg/sq. cm/week	0.10	ND
Nickel Release - Trial 3	0.50	µg/sq. cm/week	0.10	ND

Conclusion

PASS

<u>Test Item(s)</u>	<u>Limit</u>	<u>Unit</u>	<u>MDL</u>	<u>004</u>
Sample Area	-	sq. cm	-	2.24
Volume of Test Solution	-	ml	-	2.24
Spot Test	-	-	-	Negative
Nickel Release - Trial 1	0.50	µg/sq. cm/week	0.10	ND
Nickel Release - Trial 2	0.50	µg/sq. cm/week	0.10	0.13
Nickel Release - Trial 3	0.50	µg/sq. cm/week	0.10	0.10

Conclusion

PASS

<u>Test Item(s)</u>	<u>Limit</u>	<u>Unit</u>	<u>MDL</u>	<u>005</u>
Sample Area	-	sq. cm	-	5.60
Volume of Test Solution	-	ml	-	5.60
Spot Test	-	-	-	Negative
Nickel Release - Trial 1	0.50	µg/sq. cm/week	0.10	ND
Nickel Release - Trial 2	0.50	µg/sq. cm/week	0.10	ND

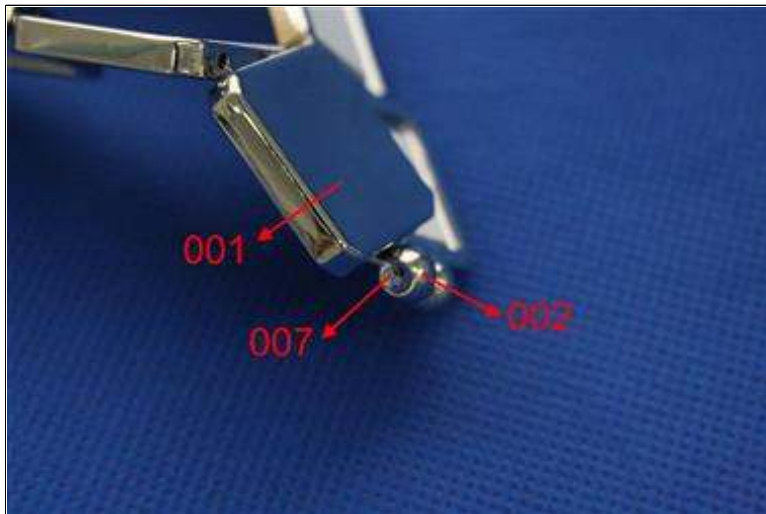
This document is issued by the Company subject to its General Conditions of Service printed overleaf, available on request or accessible at <http://www.sgs.com/en/Terms-and-Conditions.aspx> and, for electronic format documents, subject to Terms and Conditions for Electronic Documents at <http://www.sgs.com/en/Terms-and-Conditions/Terms-e-Document.aspx>. Attention is drawn to the limitation of liability, indemnification and jurisdiction issues defined therein. Any holder of this document is advised that information contained hereon reflects the Company's findings at the time of its intervention only and within the limits of Client's instructions, if any. The Company's sole responsibility is to its Client and this document does not exonerate parties to a transaction from exercising all their rights and obligations under the transaction documents. This document cannot be reproduced except in full without prior written approval of the Company. Any unauthorized alteration, forgery or falsification of the content or appearance of this document is unlawful and offenders may be prosecuted to the fullest extent of the law. Unless otherwise stated the results shown in this test report refer only to the sample(s) tested and such sample(s) are retained for 30 days only.

Attention: To ensure the authenticity of testing /inspection report & certificate, please contact us at telephone: (86-755)83071443, or email: CN.Doccheck@sgs.com

Sample photo:

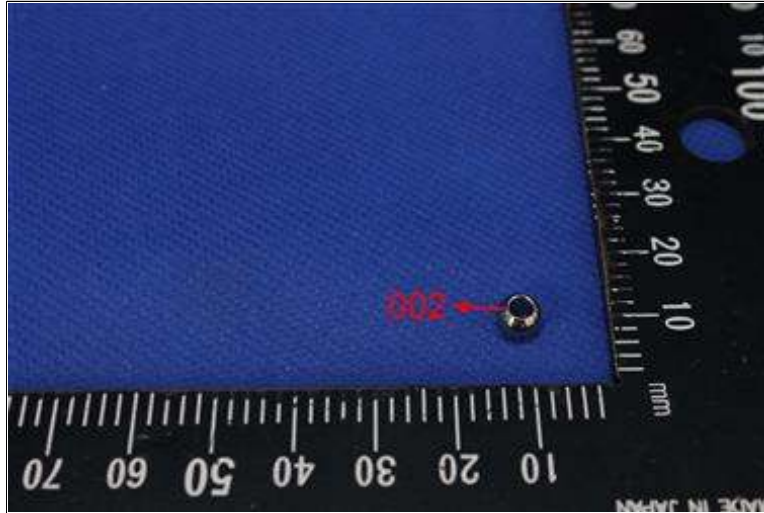


Product Photo



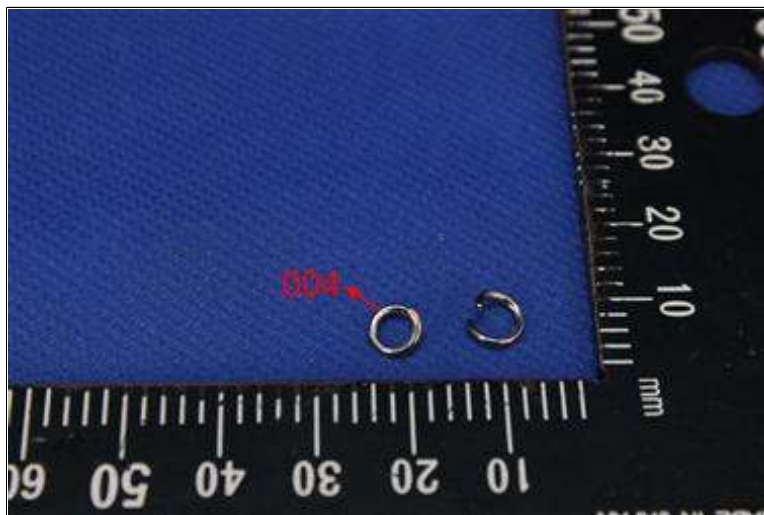
This document is issued by the Company subject to its General Conditions of Service printed overleaf, available on request or accessible at <http://www.sgs.com/en/Terms-and-Conditions.aspx> and, for electronic format documents, subject to Terms and Conditions for Electronic Documents at <http://www.sgs.com/en/Terms-and-Conditions/Terms-e-Document.aspx>. Attention is drawn to the limitation of liability, indemnification and jurisdiction issues defined therein. Any holder of this document is advised that information contained hereon reflects the Company's findings at the time of its intervention only and within the limits of Client's instructions, if any. The Company's sole responsibility is to its Client and this document does not exonerate parties to a transaction from exercising all their rights and obligations under the transaction documents. This document cannot be reproduced except in full without prior written approval of the Company. Any unauthorized alteration, forgery or falsification of the content or appearance of this document is unlawful and offenders may be prosecuted to the fullest extent of the law. Unless otherwise stated the results shown in this test report refer only to the sample(s) tested and such sample(s) are retained for 30 days only.

Attention: To ensure the authenticity of testing /inspection report & certificate, please contact us at telephone: (86-755)83071443, or email: CN.Doccheck@sgs.com



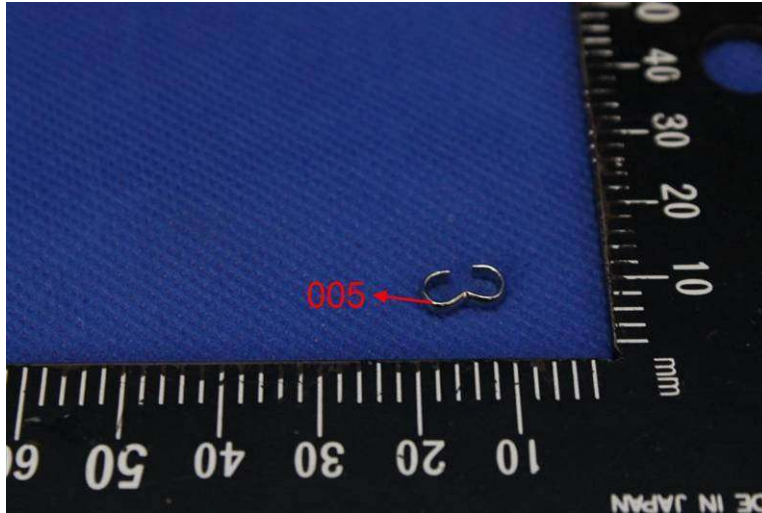
This document is issued by the Company subject to its General Conditions of Service printed overleaf, available on request or accessible at <http://www.sgs.com/en/Terms-and-Conditions.aspx> and, for electronic format documents, subject to Terms and Conditions for Electronic Documents at <http://www.sgs.com/en/Terms-and-Conditions/Terms-e-Document.aspx>. Attention is drawn to the limitation of liability, indemnification and jurisdiction issues defined therein. Any holder of this document is advised that information contained hereon reflects the Company's findings at the time of its intervention only and within the limits of Client's instructions, if any. The Company's sole responsibility is to its Client and this document does not exonerate parties to a transaction from exercising all their rights and obligations under the transaction documents. This document cannot be reproduced except in full without prior written approval of the Company. Any unauthorized alteration, forgery or falsification of the content or appearance of this document is unlawful and offenders may be prosecuted to the fullest extent of the law. Unless otherwise stated the results shown in this test report refer only to the sample(s) tested and such sample(s) are retained for 30 days only.

Attention: To ensure the authenticity of testing /inspection report & certificate, please contact us at telephone: (86-755)83071443, or email: CN.Doccheck@sgs.com



This document is issued by the Company subject to its General Conditions of Service printed overleaf, available on request or accessible at <http://www.sgs.com/en/Terms-and-Conditions.aspx> and, for electronic format documents, subject to Terms and Conditions for Electronic Documents at <http://www.sgs.com/en/Terms-and-Conditions/Terms-e-Document.aspx>. Attention is drawn to the limitation of liability, indemnification and jurisdiction issues defined therein. Any holder of this document is advised that information contained hereon reflects the Company's findings at the time of its intervention only and within the limits of Client's instructions, if any. The Company's sole responsibility is to its Client and this document does not exonerate parties to a transaction from exercising all their rights and obligations under the transaction documents. This document cannot be reproduced except in full without prior written approval of the Company. Any unauthorized alteration, forgery or falsification of the content or appearance of this document is unlawful and offenders may be prosecuted to the fullest extent of the law. Unless otherwise stated the results shown in this test report refer only to the sample(s) tested and such sample(s) are retained for 30 days only.

Attention: To ensure the authenticity of testing /inspection report & certificate, please contact us at telephone: (86-755)83071443, or email: CN.Doccheck@sgs.com



End of Report

This document is issued by the Company subject to its General Conditions of Service printed overleaf, available on request or accessible at <http://www.sgs.com/en/Terms-and-Conditions.aspx> and, for electronic format documents, subject to Terms and Conditions for Electronic Documents at <http://www.sgs.com/en/Terms-and-Conditions/Terms-e-Document.aspx>. Attention is drawn to the limitation of liability, indemnification and jurisdiction issues defined therein. Any holder of this document is advised that information contained hereon reflects the Company's findings at the time of its intervention only and within the limits of Client's instructions, if any. The Company's sole responsibility is to its Client and this document does not exonerate parties to a transaction from exercising all their rights and obligations under the transaction documents. This document cannot be reproduced except in full without prior written approval of the Company. Any unauthorized alteration, forgery or falsification of the content or appearance of this document is unlawful and offenders may be prosecuted to the fullest extent of the law. Unless otherwise stated the results shown in this test report refer only to the sample(s) tested and such sample(s) are retained for 30 days only.

Attention: To ensure the authenticity of testing /inspection report & certificate, please contact us at telephone: (86-755)83071443, or email: CN.Doccheck@sgs.com